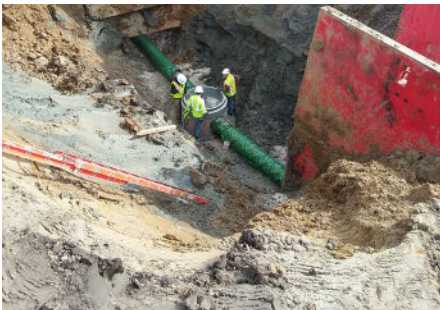
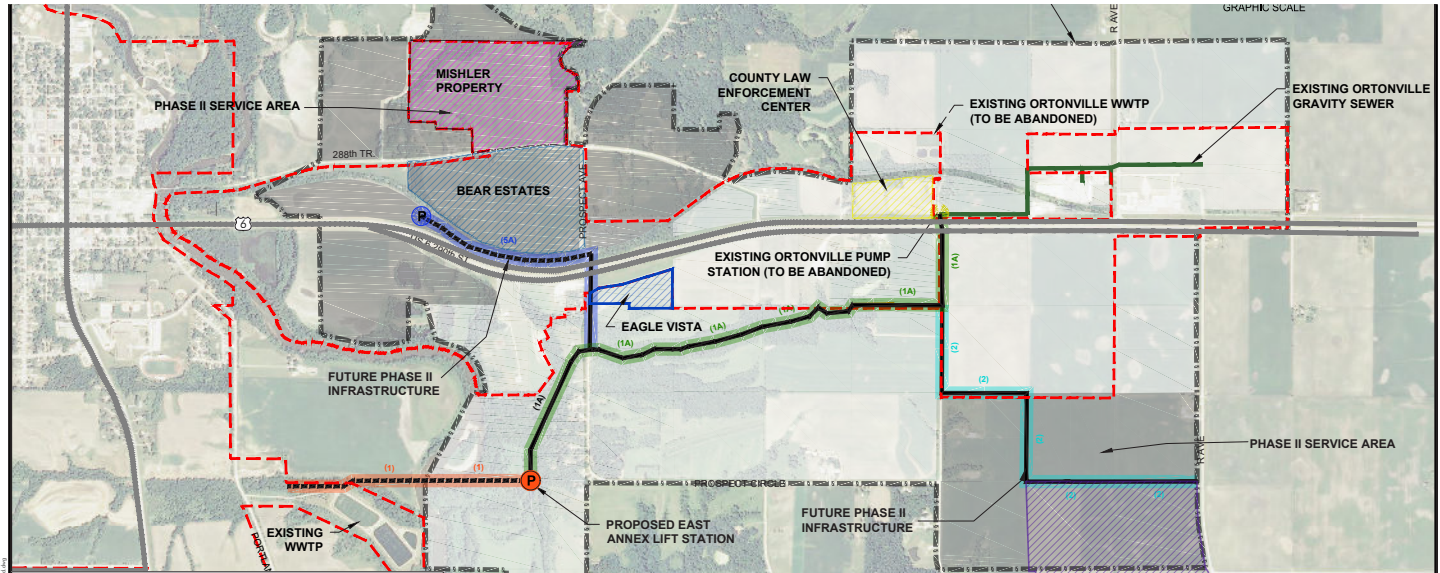


EAST ANNEX SANITARY SEWER AND LIFT STATION

ADEL, IOWA



PROJECT DESCRIPTION

The City of Adel has experienced significant residential and commercial growth, including areas east of the Raccoon River extending along Highway 6 to the Ortonville Business Park. To further support existing development and planned growth, including the Dallas County Public Safety Facility, the extension of municipal sanitary sewer service, a new lift station, and force main was necessary.

McClure was retained to complete the project. A schematic design phase was implemented to quickly identify alternative routes and determine constructability and cost-effectiveness. McClure was able to begin the environmental assessment and clearance process in parallel with land acquisition efforts. This strategy was instrumental in maintaining the overall project schedule. Land acquisition, regulatory coordination, and permitting were identified as key scope items. McClure completed complete land acquisition efforts, including landowner negotiation, land surveying, plat development, and filing of easements on behalf of the City. Coordination and permitting were required between Dallas County, Iowa DNR Wastewater Engineering, Iowa DNR Floodplain Division, Army Corps of Engineers, SHPO, and Iowa DOT. A certified Wetland Delineation was completed by McClure.

The project was bid on in November 2018. Ten total bids were received, and the total of awarded construction work was approximately \$500,000 below the budgeted estimate. Construction was completed on-budget in December 2019.

COMPLETION DATE

2019

REFERENCE

Anthony Brown
City Administrator
P 515.993.4525
abrown@adeliowa.org

PROJECT HIGHLIGHTS:

- 1.0 MGD capacity lift station, expandable to 3.5 MGD.
- Vertical fine screen for pump protection and solids removal.
- Project provides sanitary service to support existing and future development (1,700+ total acres).
- 14,000' of gravity sewer and force main ranging from 8"-24" diameter.
- 1,000' of trenchless construction including a 475' boring of the Raccoon River and 300' boring of Highway 6.
- Regulatory coordination and permitting.