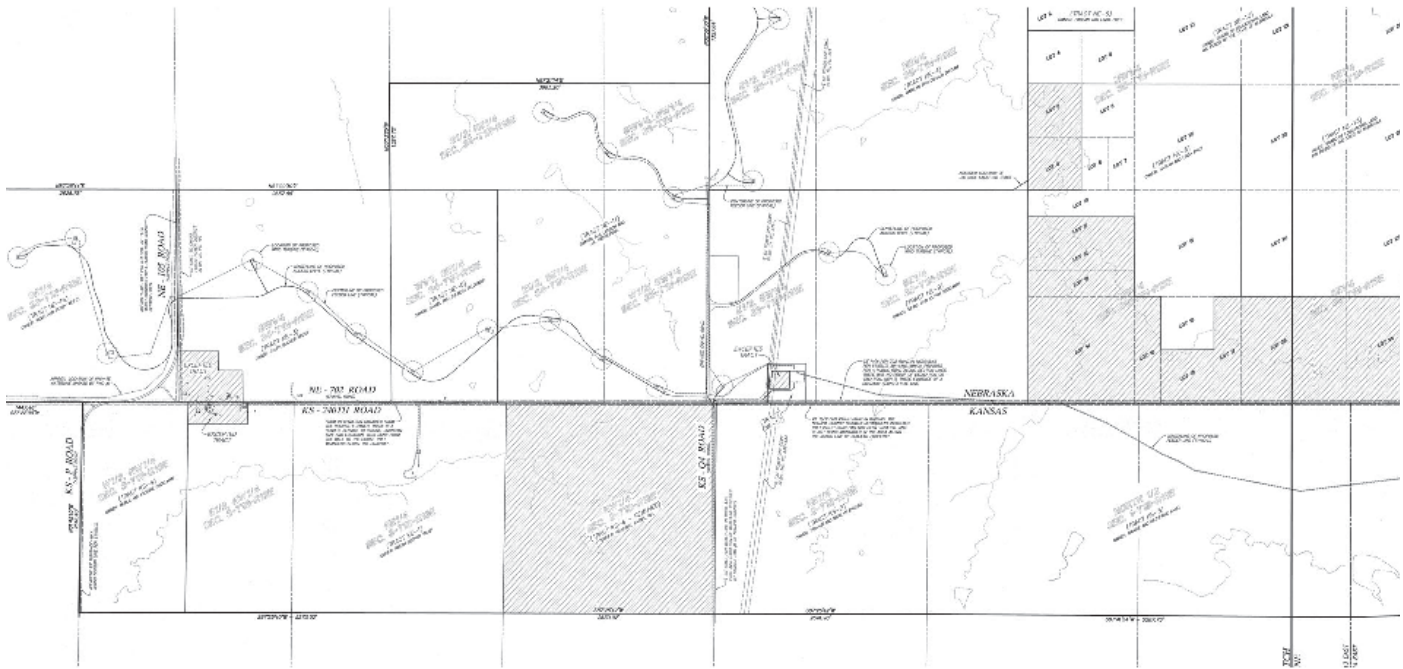


# FLAT WATER WIND FARM DESIGN SURVEYS AND CONSTRUCTION STAKING

RICHARDSON COUNTY, NEBRASKA



## PROJECT OVERVIEW

McClure provided survey and engineering services in the construction of the Flat Water Wind Farm which features 40 GE 1.5 MW wind turbines with an overall capacity of 60 megawatts and an annual energy yield of approximately 220 million kilowatt hours. Initially, McClure field crews prepared an ALTA/ACSM survey on approximately 5000 acres which included multiple parcels owned by several different owners; and since the site stretched between two states, McClure survey crews established the state line between Kansas and Nebraska. McClure also prepared the micro and design surveys: The trucks that carry turbine parts are very long and must have a special turning radius when making corners, so McClure also prepared a profile of Pennsylvania Road and topographic surveys on the 232nd Road bridge and intersection along the haul routes. McClure field crews did construction staking on the 40 wind turbines, road center lines, junction boxes, sub-station pad and electric cable route, and the site's operation and maintenance building.

## REFERENCE

Lynette Wood, Project Manager  
wood@juwi-international.com

## PRIMARY CLIENT

JW Prairie Wind Power LLC

## COMPLETION DATE

2010

