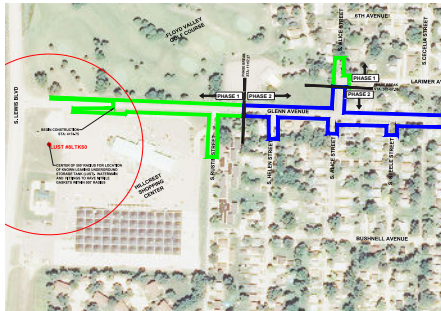


GLENN AVENUE RECONSTRUCTION (SOUTH CECELIA STREET TO SOUTH RUSTIN STREET)

SIOUX CITY, IOWA



COMPLETION DATE

2020

REFERENCE

Justin Pottorff, PE
Senior Civil Engineer
P 712.279.6315
jpottorff@sioux-city.org

PROJECT DESCRIPTION

Glenn Avenue is an important arterial street in the Morningside neighborhood, with an average traffic volume of 6,800 vehicles per day.

The final phase of reconstruction (South Cecelia Street to South Rustin Street) provides a rebuilt roadway with new utilities all the way from South Cecelia Street to the Hillcrest Shopping Center.

The project involved a full reconstruction with new pavement, sidewalks, driveways, retaining walls, water main, sanitary sewer, storm sewer and subdrains. Also the project included the realignment of South Alice Street to create a true cross intersection to improve safety along the corridor.

This project required four acquisitions of property and 16 temporary easements. A Critical Closure Incentive was included as well as a Final Completion Incentive/Disincentive.

PROJECT HIGHLIGHTS

- In order to improve intersection geometry and safety, the intersection of South Alice and Glenn was realigned.
- Because of the impacts and disruption to the homes and businesses, McClure and the City coordinated public open house meetings to inform the public and get feedback.
- In-depth and intensive coordination with MidAmerican Energy and other utility companies.
- Due to federal aid requirements, the project followed the Iowa DOT project development process.
- The project was 80% funded through STP.
- The project included a detailed staging layout to allow for continuous access to residents along the corridor during construction.