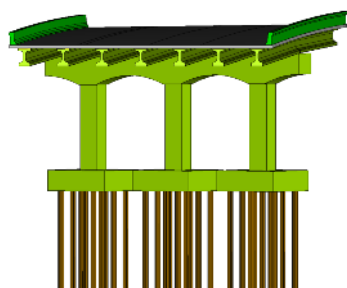
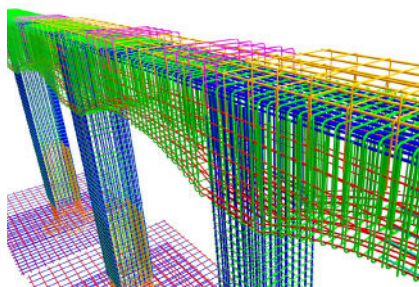
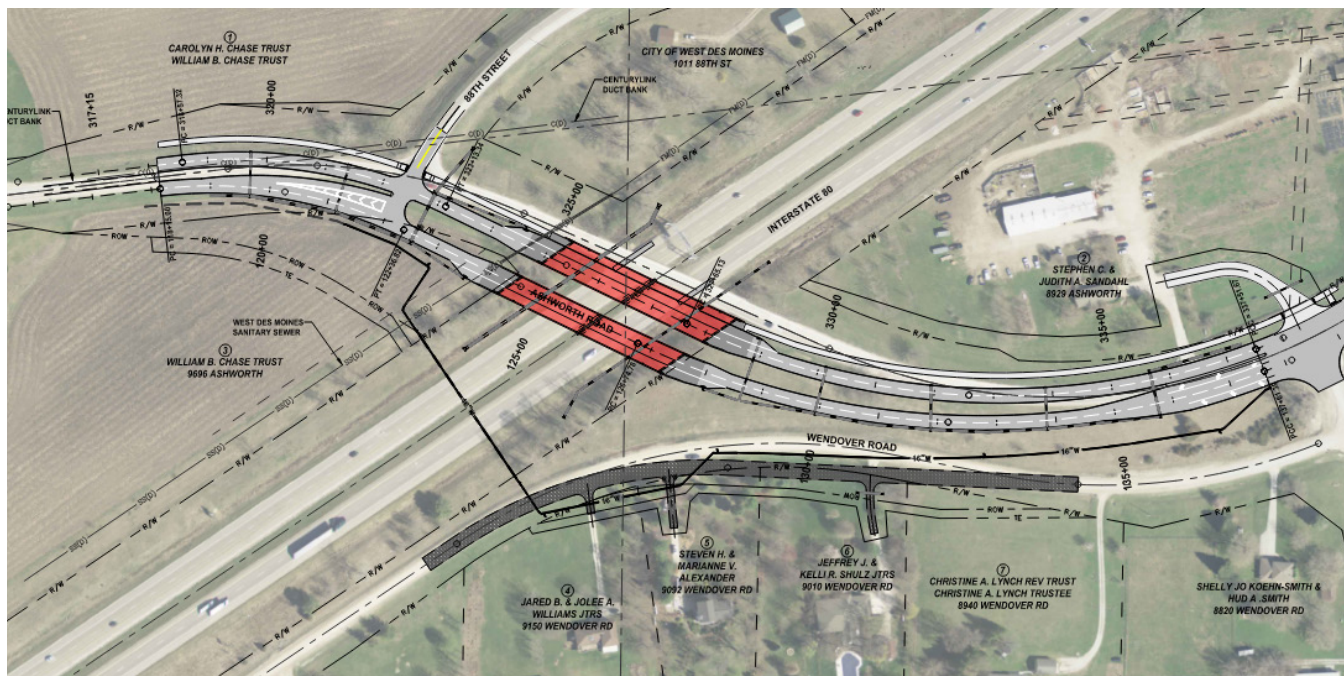


ASHWORTH ROAD PHASE 4

WEST DES MOINES, IOWA



PROJECT DESCRIPTION

McClure provided survey, roadway, drainage, bridge, and geotechnical design for two bridges over Interstate 80 as part of the Ashworth Road Phase 4 project for the City of West Des Moines. Phase 4 of the project consists of replacing the existing two-lane bridge over Interstate 80 and connecting recently constructed segments of the road on either side of the interstate, which widened Ashworth from a two-lane rural section to a four-lane urban section. In addition to the current widening, the two replacement bridges have also been sized with future improvements in mind, allowing maximum flexibility to the City for future development. The new structures will accommodate multiple future interchange configurations along with widening of Interstate 80 from four lanes to eight lanes. The replacement bridges will be two-span Pretensioned Prestressed Concrete Beam structures 302-feet in length with variable widths. The westbound bridge will include a shared use path, which features aesthetic pedestrian railings and barriers. These treatments used in conjunction with aesthetic frame piers will provide a unifying theme with the nearby Grand Prairie Parkway bridge over Interstate 80. The new structures will be completed in stages, such that Ashworth Road will remain open to traffic and have minimal impact to the traveling public throughout construction. The bridges have been let, with construction just getting underway.

REFERENCE

Brian Hemesath, PE
City Engineer
P 515.222.3620
brian.hemesath@wdm.iowa.gov

PROJECT HIGHLIGHTS:

- Bridges have been sized for future improvements to allow the City flexibility for future development.
- The new structures will accommodate multiple future interchange configurations along with widening of Interstate 80 from four lanes to eight lanes.
- Westbound bridge will include a shared use path with aesthetically pleasing features.