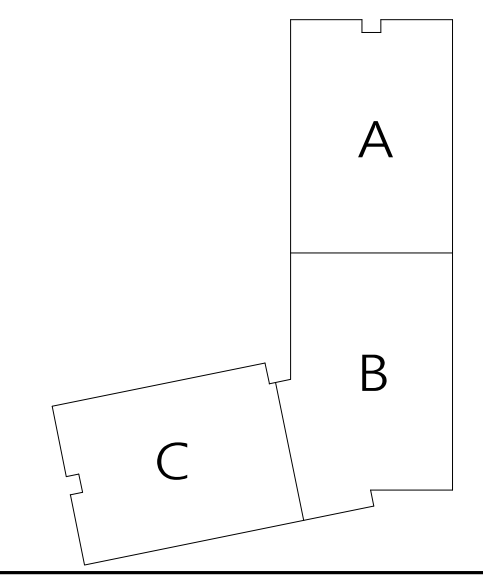


COLD-FORMED STEEL PANEL FABRICATION DRAWINGS

PROJECT:

PREPARED FOR:

KEY PLAN



REVISIONS:

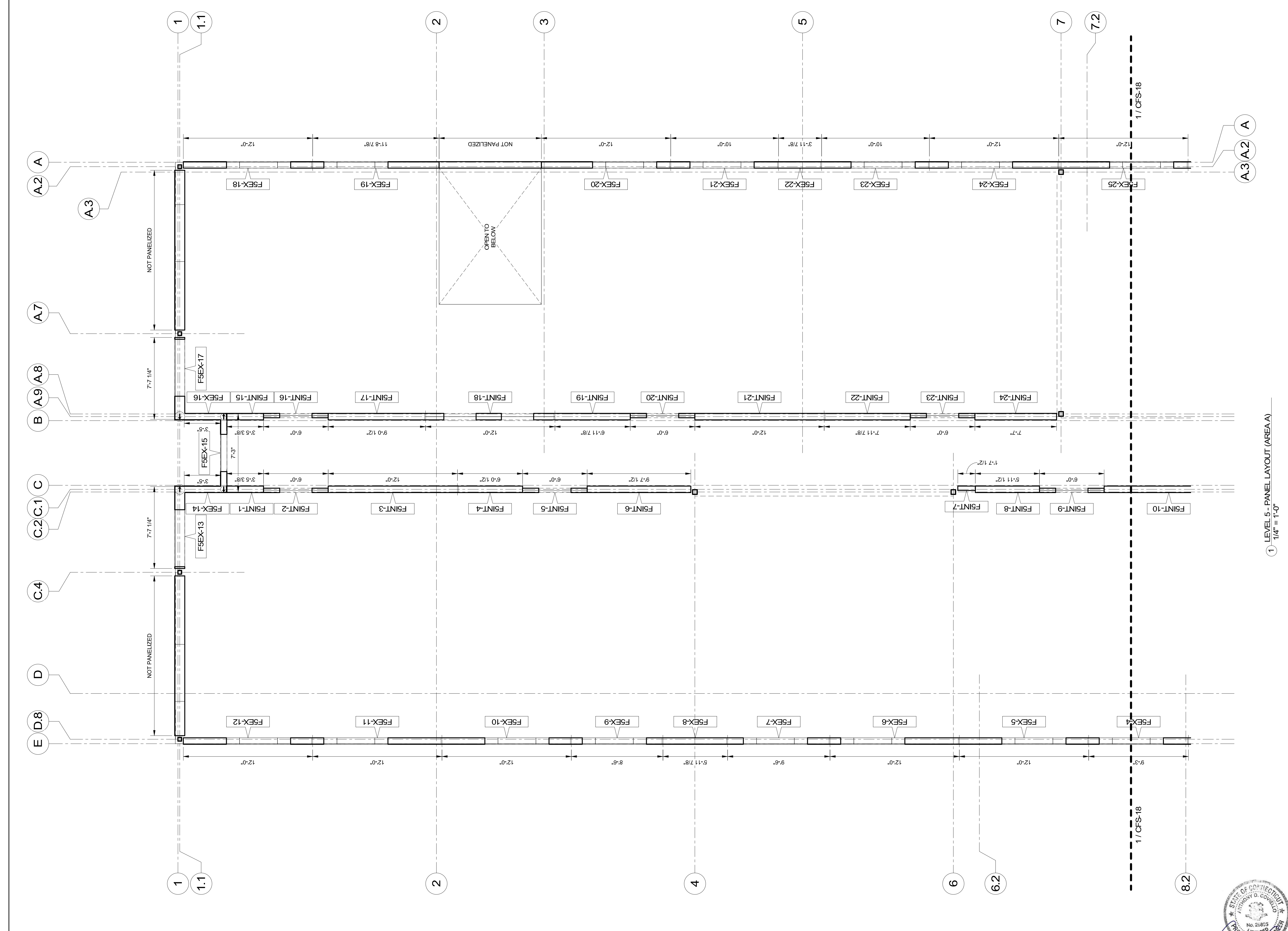
DRAWN BY: TM
DATE:
JOB NUMBER:


TITLE:

LEVEL 5 - PANEL LAYOUT PLAN (AREA A)

SHEET NUMBER:

CFS-17



Wall Panel: CFS-20	Project Name/Location:	Job Number:	Original Date: Revision:	Scale: N.T.S.	Drawn By: TM	 McCLURE TM <small>McCLUREVISION.COM 25 New Hampshire Ave Suite 255 Portsmouth, NH 03801 603-766-0435</small>
----------------------------------	-------------------------------	--------------------	--	-----------------------------	----------------------------	---

LEVEL 5 MATERIAL CUT LIST		
SIZE	QTY.	LENGTH

150U150-54(50)	2	4 5/8"
150U150-54(50)	2	5 9/16"
150U150-54(50)	2	8 3/16"
150U150-54(50)	2	9 1/4"
150U150-54(50)	4	10"
150U150-54(50)	2	10 1/4"
150U150-54(50)	2	10 1/2"
150U150-54(50)	2	11 1/4"
150U150-54(50)	2	11 1/2"
150U150-54(50)	2	11 3/4"
150U150-54(50)	2	11 7/8"
150U150-54(50)	2	1' - 0"
150U150-54(50)	2	1' - 0 1/16"
150U150-54(50)	2	1' - 1"
150U150-54(50)	2	1' - 1 1/4"
150U150-54(50)	4	1' - 3 1/8"
150U150-54(50)	2	1' - 3 3/8"
150U150-54(50)	2	1' - 3 5/8"
150U150-54(50)	2	1' - 4"
150U150-54(50)	56	1' - 4 7/8"
150U150-54(50)	2	1' - 5 1/8"
150U150-54(50)	2	1' - 5 1/2"
150U150-54(50)	2	1' - 6"
150U150-54(50)	2	1' - 6 5/8"
150U150-54(50)	2	1' - 7 1/8"
150U150-54(50)	2	1' - 7 1/2"
150U150-54(50)	2	1' - 7 5/8"
150U150-54(50)	2	1' - 7 3/4"
150U150-54(50)	2	1' - 8 1/2"
150U150-54(50)	2	1' - 8 3/4"
150U150-54(50)	4	1' - 9"
150U150-54(50)	10	1' - 10 3/8"
150U150-54(50)	2	1' - 10 1/2"
150U150-54(50)	2	1' - 10 5/8"
150U150-54(50)	2	2' - 0 1/16"
150U150-54(50)	2	2' - 0 1/8"
150U150-54(50)	2	2' - 0 3/8"
150U150-54(50)	2	2' - 0 5/8"
150U150-54(50)	2	2' - 0 7/8"
150U150-54(50)	10	2' - 1 3/8"
150U150-54(50)	2	2' - 1 1/2"
150U150-54(50)	2	2' - 1 5/8"
150U150-54(50)	2	2' - 1 7/8"
150U150-54(50)	2	2' - 2 1/8"
150U150-54(50)	2	2' - 2 3/4"

LEVEL 5 MATERIAL CUT LIST		
SIZE	QTY.	LENGTH

150U150-54(50)	2	2' - 3 1/4"
150U150-54(50)	2	2' - 3 1/2"
150U150-54(50)	2	2' - 6 1/4"
150U150-54(50)	2	2' - 8 3/8"
150U150-54(50)	2	3' - 2 7/8"
150U150-54(50)	8	3' - 5"
150U150-54(50)	4	3' - 5 3/8"
150U150-54(50)	4	3' - 6"
150U150-54(50)	2	3' - 9 5/8"
150U150-54(50)	2	3' - 10 1/8"
150U150-54(50)	4	3' - 10 3/8"
150U150-54(50)	2	3' - 10 7/8"
150U150-54(50)	2	3' - 11 3/8"
150U150-54(50)	2	3' - 11 1/2"
150U150-54(50)	2	3' - 11 11/16"
150U150-54(50)	4	3' - 11 7/8"
150U150-54(50)	2	4' - 1 1/8"
150U150-54(50)	2	4' - 1 3/8"
150U150-54(50)	2	4' - 2 3/4"
150U150-54(50)	2	4' - 2 7/8"
150U150-54(50)	2	4' - 3"
150U150-54(50)	2	4' - 5 1/8"
150U150-54(50)	2	4' - 5 5/8"
150U150-54(50)	2	4' - 8 1/8"
150U150-54(50)	2	4' - 8 9/16"
150U150-54(50)	6	4' - 8 5/8"
150U150-54(50)	2	4' - 10 1/2"
150U150-54(50)	2	4' - 11 3/4"
150U150-54(50)	2	5' - 0"
150U150-54(50)	2	5' - 0 1/4"
150U150-54(50)	2	5' - 1 1/2"
150U150-54(50)	2	5' - 1 3/4"
150U150-54(50)	2	5' - 2 1/2"
150U150-54(50)	2	5' - 5 7/8"
150U150-54(50)	2	5' - 7 1/4"
150U150-54(50)	2	5' - 11 1/2"
150U150-54(50)	2	5' - 11 7/8"
150U150-54(50)	2	6' - 0 1/2"
150U150-54(50)	2	6' - 5 7/8"
150U150-54(50)	2	6' - 6 1/2"
150U150-54(50)	2	6' - 11 7/8"
150U150-54(50)	2	7' - 6"
150U150-54(50)	2	7' - 7"
150U150-54(50)	2	7' - 7 1/2"
150U150-54(50)	8	7' - 11 7/8"

LEVEL 5 MATERIAL CUT LIST		
SIZE	QTY.	LENGTH

150U150-54(50)	2	8' - 0 13/16"
150U150-54(50)	2	8' - 4"
150U150-54(50)	2	8' - 4 1/16"
150U150-54(50)	2	9' - 0 1/2"
150U150-54(50)	1	9' - 2 13/16"
150U150-54(50)	2	9' - 6 1/2"
150U150-54(50)	2	9' - 7 1/2"
150U150-54(50)	12	12' - 0"
362S162-54(50) U	28	3' - 1 7/8"
362S200-97(50) U	28	9' - 11 11/16"
362S300-54(50)	15	2' - 11 1/16"
362S300-54(50)	31	9' - 11 11/16"
362S300-54(50) U	26	2' - 11 1/16"
362T125-43(33)	2	1' - 7 1/2"
362T125-43(33)	14	2' - 9 7/8"
362T125-43(33)	14	3' - 1 7/8"
362T125-43(33)	28	6' - 0"
362T125-54(50)	26	11 3/4"
362T200-54(50)	28	3 5/8"
400S162-43(33) U	66	3' - 6"
600S162-43(33)	167	1' - 4 11/16"
600S162-43(33)	66	1' - 10 3/4"
600S162-43(33)	15	2' - 0 3/8"
600S162-43(33)	4	2' - 10 11/16"
600S162-43(33)	6	6' - 4 11/16"
600S162-43(33)	250	9' - 11 11/16"
600S162-43(33)	16	11' - 5 11/16"
600S162-43(33) U	10	3' - 1 7/8"
600S162-43(33) U	4	3' - 5 7/8"
600S162-43(33) U	8	5' - 3 7/8"
600S162-43(33) U	2	5' - 11 7/8"
600S162-43(33) U	33	6' - 0"
600S162-43(33) U	4	11' - 5 11/16"
600S162-54(50)	7	2' - 8 11/16"
600S162-54(50)	1	8' - 3 3/16"
600S162-54(50)	2	8' - 4 5/8"
600S162-54(50)	243	9' - 11 11/16"
600S162-54(50)	16	11' - 5 11/16"
600S162-54(50) U	4	2' - 8 11/16"
600S162-54(50) U	10	9' - 11 11/16"
600S162-54(50) U	66	5' - 11 7/8"
600S162-54(50) U	2	8' - 8 3/8"
600S200-54(50) U	66	9' - 11 11/16"
600S250-54(50) U	10	9' - 11 11/16"
600S300-54(50) U	2	16' - 11 11/16"

LEVEL 5 MATERIAL CUT LIST		
SIZE	QTY.	LENGTH

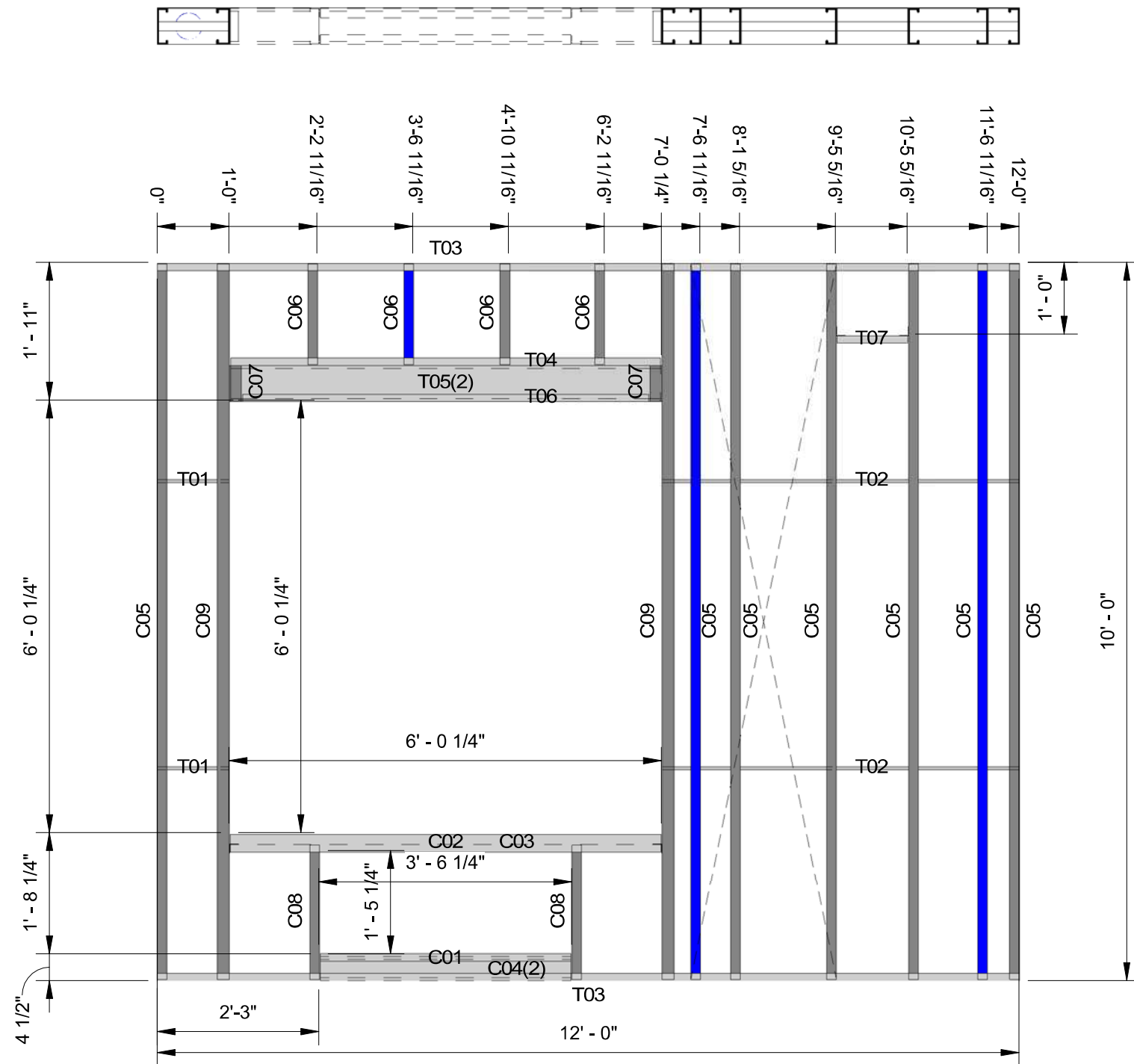
600T125-43(33)	2	10 1/2"
600T125-43(33)	1	10 3/4"
600T125-43(33)	15	11 3/4"
600T125-43(33)	1	1' - 0 1/8"
600T125-43(33)	1	1' - 6 3/4"
600T125-43(33)	5	2' - 9 7/8"
600T125-43(33)	7	3' - 1 7/8"
600T125-43(33)	8	3' - 5"
600T125-43(33)	4	3' - 5 3/8"
600T125-43(33)	2	3' - 5 7/8"
600T125-43(33)	39	3' - 6"
600T125-43(33)	2	3' - 11 7/8"
600T125-43(33)	2	4' - 1 1/2"
600T125-43(33)	2	4' - 5 5/8"
600T125-43(33)	2	5' - 0"
600T125-43(33)	2	5' - 5 7/8"
600T125-43(33)	2	5' - 7 1/4"
600T125-43(33)	34	5' - 7 7/8"
600T125-43(33)	2	5' - 11 1/2"
600T125-43(33)	36	5' - 11 7/8"
600T125-43(33)	1	6' - 0"
600T125-43(33)	2	6' - 0 1/2"
600T125-43(33)	2	6' - 5 7/8"
600T125-43(33)	2	6' - 6 1/2"
600T125-43(33)	2	6' - 11 7/8"
600T125-43(33)	4	7' - 3"
600T125-43(33)	2	7' - 6"
600T125-43(33)	2	7' - 7"
600T125-43(33)	2	7' - 7 1/2"
600T125-43(33)	2	7' - 8 5/16"
600T125-43(33)	8	7' - 11 7/8"
600T125-43(33)	2	8' - 0 13/16"
600T125-43(33)	2	8' - 4"
600T125-43(33)	1	8' - 4 3/8"
600T125-43(33)	2	8' - 6"
600T125-43(33)	1	8' - 8 3/8"
600T125-43(33)	1	8' - 8 1/2"
600T125-43(33)	2	9' - 0"
600T125-43(33)	2	9' - 0 1/2"
600T125-43(33)	2	9' - 3"
600T125-43(33)	2	9' - 3 1/16"
600T125-43(33)	2	9' - 6"
600T125-43(33)	2	9' - 6 1/2"
600T125-43(33)	2	9' - 7 1/2"
600T125-43(33)	8	10' - 0"

LEVEL 5 MATERIAL CUT LIST		
SIZE	QTY.	LENGTH


600T125-43(33)	2	10' - 11 5/8"
600T125-43(33)	2	11' - 6 7/8"
600T125-43(33)	2	11' - 8 7/8"
600T125-43(33)	2	11' - 10 3/4"
600T125-43(33)	4	11' - 11 7/8"
600T125-43(33)	54	12' - 0"
600T125-43(33)	2	12' - 1 1/2"
600T125-54(50)	2	16' - 9"
600T125-54(50)	2	11 3/4"
600T125-54(50)	3	1' - 0 3/4"
600T125-54(50)	2	1' - 5 3/4"
600T125-54(50)	2	1' - 6 3/4"
600T200-54(50)	84	6"
600T300-43(33)	33	6' - 0"
1000S162-54(50)	16	2' - 0 3/8"
1000S162-54(50)	16	2' - 10 11/16"
1000S162-54(50)	8	11' - 5 11/16"
1000S162-54(50) U	8	11' - 5 11/16"
1000T125-54(50)	4	4' - 11 7/8"
1000T125-54(50)	4	5' - 3 7/8"
1000T125-54(50)	4	5' - 4"
1000T125-54(50)	8	7' - 7 1/4"
1000T200-54(50)	8	6"
S543	52	3"
S545	128	5"
S549	8	9"

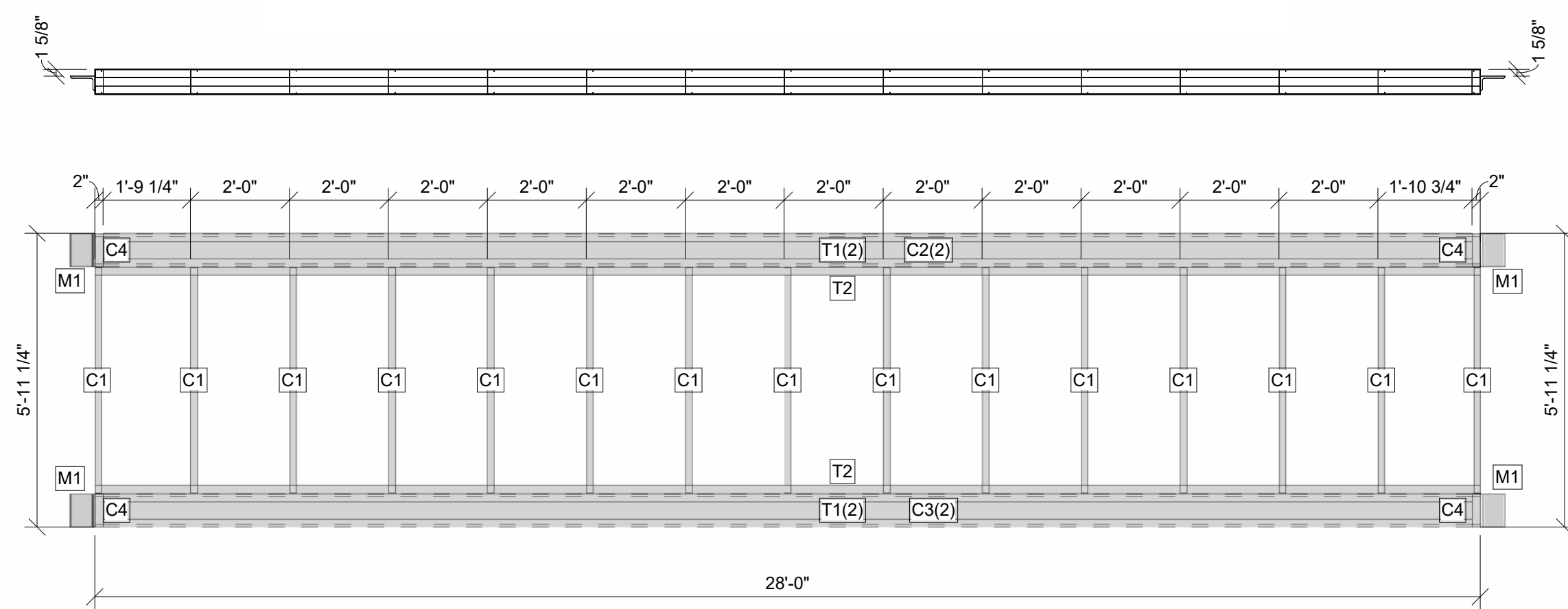
F5EX-11 - Framing Cut List

PART ID	QTY.	SIZE	LENGTH	TOTAL WEIGHT
C01	1	600T125-43(33)	3' - 6"	4.55 lb
C02	1	600T300-43(33)	6' - 0"	11.04 lb
C03	1	600S162-43(33) U	6' - 0"	9.12 lb
C04	2	400S162-43(33) U	3' - 6"	8.47 lb
C05	7	600S162-43(33)	9' - 11 11/16"	106.11 lb
C06	4	600S162-43(33)	1' - 4 11/16"	8.46 lb
C07	2	600T200-54(50)	6"	1.92 lb
C08	2	600S162-43(33)	1' - 10 3/4"	5.77 lb
C09	2	600S200-54(50) U	9' - 11 11/16"	41.69 lb
OClip01	2	S545	5"	0.48 lb
T01	2	150U150-54(50)	1' - 0"	0.88 lb
T02	2	150U150-54(50)	4' - 11 3/4"	4.38 lb
T03	2	600T125-43(33)	12' - 0"	31.20 lb
T04	1	600T125-43(33)	5' - 11 7/8"	7.79 lb
T05	2	600S162-54(50) U	5' - 11 7/8"	22.64 lb
T06	1	600T125-43(33)	5' - 7 7/8"	7.35 lb
T07	1	600T125-43(33)	11 3/4"	1.27 lb
				273.13 lb



- NOTES:**
1. IRON ENGINEERING ASSUMES NO RESPONSIBILITY FOR DETERMINING HOW PANELS SHOULD BE LIFTED AND PLACED.
 2. CONTRACTOR IS TO REVIEW ALL DIMENSIONS PROVIDED AND CONTACT IRON ENGINEERING, PRIOR TO FABRICATION, FOR ANY CHANGES TO DIMENSIONS SHOWN ON THESE DRAWINGS.

Wall Panel: G-9-8-1	Project Name:	Project Address:	Original Date:	Scale: 3/8" = 1'-0"	Client:	 McCLURE [™]	McCLUREVISION.COM 25 New Hampshire Ave Suite 255 Portsmouth, NH 03801 603-766-0435
		Project Number:	Revision:	Drawn By: TRM			



PANEL CUT LIST				
PART ID	QTY.	SIZE	LENGTH	TOTAL WEIGHT
C1	15	600S162-33(33)	4'-6 3/4"	80.06 lb
C2	2	800S200-68(50)	27'-11 7/8"	172.97 lb
C3	2	800S200-68(50)	27'-11 7/8"	173.00 lb
C4	4	600T300-68(50)	8"	7.76 lb
M1	4	L6X3-1/2X1/2	8"	40.80 lb
T1	4	600T300-68(50)	27'-8"	322.04 lb
T2	2	600T300-68(50)	28'-0"	162.96 lb
				959.60 lb

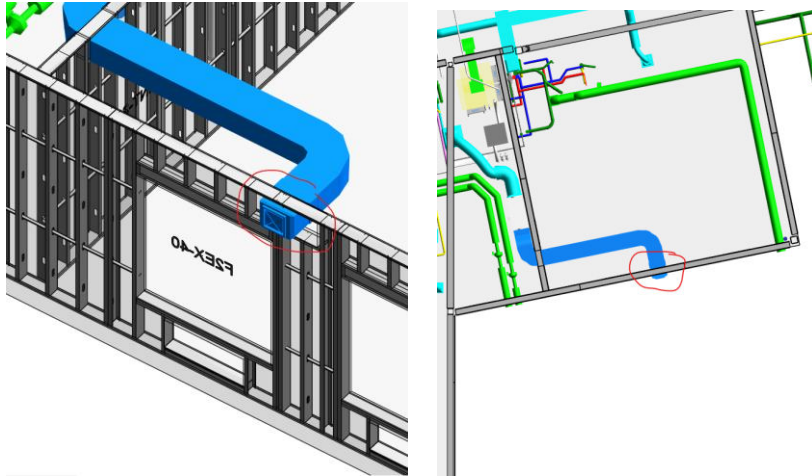
NOTES:
 1. ALL FRAMING TO CONFORM TO McCLURE ENGINEERING CO. SHOP DRAWINGS - NO EXCEPTIONS ALLOWED
 2. CONTRACTOR IS TO REVIEW ALL DIMENSIONS PROVIDED AND CONTACT McCLURE ENGINEERING CO., PRIOR TO FABRICATION, FOR ANY CHANGES TO DIMENSIONS SHOWN ON THESE DRAWINGS.

Request For Information (CFS-RFI-07)

- **Project Name:**
- **Provided for:**
- **Contact Name:**
- **Scope of Work:**

The below RFI items are specifically related to the Level 2, Level 3, & Level 5 HVAC/plumbing clashes with CFS walls as determined by Iron Engineering:

1. **Level 2 – Along CL 9.2’** – The blue duct in this location clashes with the jamb of the window opening and must be moved. Iron Engineering had already provided an opening in the exterior wall panels (which are fabricated and installed on Level 2 already) and recommends this duct be moved 11” page right of its current location to avoid additional changes to exterior framing. If that option is not viable for any reason, our other proposed solution is moving the duct 11” page left of its current location, which would place it above the header for the window opening and away from the jamb.



2. **Level 3 – Along CL C.1** – There is a cyan duct along with a large number of pipes penetrating through the top of the interior load bearing wall at this location. The pipes shown here were shown much tighter to the duct before and fit within the opening we provided in the wall for the cyan duct, however now these pipes are conflicting with the jambs of the duct opening and must be moved to avoid conflicts. The opening provided here for the duct is already at maximum allowable width without providing a header above the duct, which would further constrict the space available here. Please advise if these pipes can be moved away from the cyan duct a minimum of 3” from their current locations.

